



The leading system for the hand-loaded storage of heavy or large items



- A wide range of frames and beam sizes
- A choice of shelf materials
- Designed to safely support the greatest range of bulk storage loads
- Maximum load up to 1800kg per shelf level, up to 5443kg per bay
- Simple clip-together installation

**DATA SHEET**

# LONGSPAN SHELVING

Heavy duty, wide bay shelving



With five different types of shelf support beam and a choice of shelving materials available, Longspan can be designed to accommodate the widest range of loading requirements efficiently, safely and cost-effectively.



**Two-tier structures**

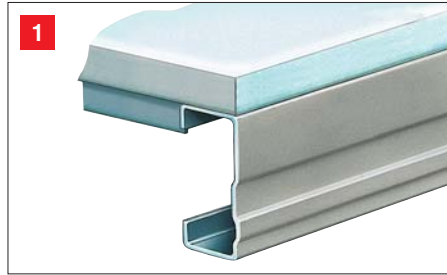


**Bulk Storage**

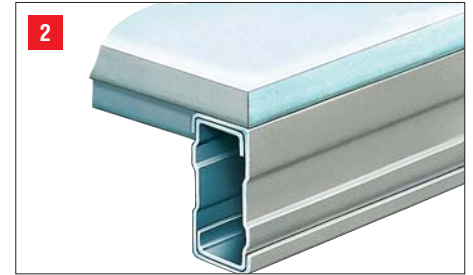


**Mobile Storage**

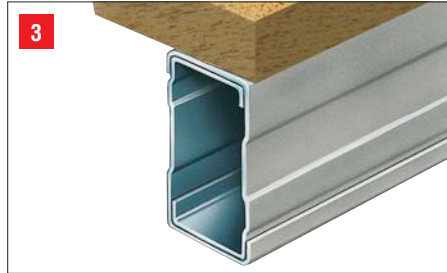
# Longspan Shelving



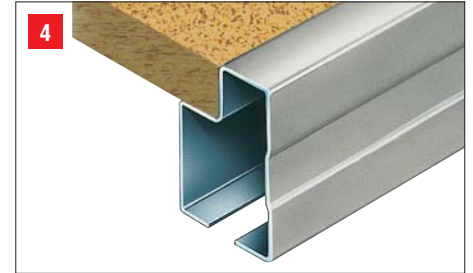
**1. Medium Duty 'C' Section Beam (2LSC)** - use as a support for chipboard or steel shelf panels. Beam lengths range from 1050-1800mm. Panels 300/374/600mm wide.



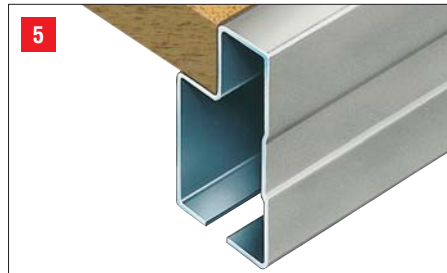
**2. Heavy Duty 'Box' Section Beam (2LBC)** - use as a support for chipboard or steel shelf panels. Beam lengths range from 1050-2400mm. Panels 300/374/600mm wide.



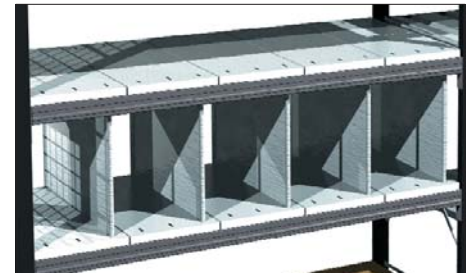
**3. Extra-Heavy Duty 'Box' Section Beam (LB070XC)** - use as a support for chipboard or steel shelf panels. Beam lengths range from 1050-3000mm.



**4. Standard Duty 'Stepped' Section Beam (2LST)** - use as a support for 18mm thickness chipboard. Beam lengths range from 1050-3000mm.

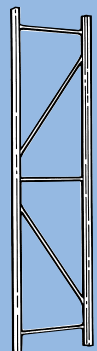


**5. Heavy Duty 'Stepped' Section Beam (4LST)** - use as a support for 25mm thickness chipboard. Beam lengths range from 1050-3000mm.

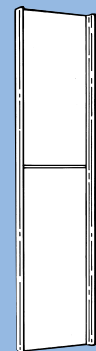


**Galvanised Shelf Dividers**  
Fit into specially pierced shelf panels to create storage compartments. Dividers 450/600mm high.

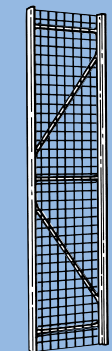
## Longspan primary components



Open frame

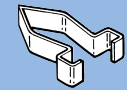


Clad frame



Mesh clad frame

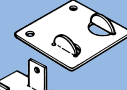
Frame height range, mm	from 1200 - 3900
Frame depths, mm	450/600/750/900/1000/1200



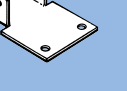
**Beam Locking Clip**  
Spring clip, locates through beam connector and into frame. Ensures that beams are correctly & safely positioned and cannot be accidentally dislodged.



**Cladding Location Bracket**  
For the secure location of chipboard shelves on box beams.



**Foot Plate**  
Slot or bolt into base of frame uprights. Bolted version allows frames to be fixed to the floor.




**Wire Beam Tie**  
Fitted for additional stability to 2LSC beams (all lengths) and 2LST & 4LST beams over 1800mm.

## Guide to colour finishes *Standard Colour Combination*

Frame upright colour

 Graphite Grey  
BS 5252 18 A14

Beam, frame bracing & cladding colour

 Light Grey  
BS 4800 00 A05

Check delivery lead time and availability for optional colours. These swatches should be used only as an approximate guide to the actual painted colours. Note: Illustrations are not to scale.



Storage Bitz, Acorn House, 22 High Street,  
Sutton Coldfield, West Midlands B72 1UX

t: 0121 321 3231 e: sales@storagebitz.com

[www.storagebitz.com](http://www.storagebitz.com)